



Florida Arbovirus Surveillance Week 9: February 28-March 5, 2016

Arbovirus surveillance in Florida includes endemic mosquito-borne viruses such as West Nile virus (WNV), Eastern equine encephalitis virus (EEEV), and St. Louis encephalitis virus (SLEV), as well as exotic viruses such as dengue virus (DENV), chikungunya virus (CHIKV) and California encephalitis group viruses (CEV). Malaria, a non-viral mosquito-borne disease is also included. During the period of February 28-March 5, 2016 the following arboviral activity was recorded in Florida.

WNV activity: No human cases of WNV infection were reported this week. No horses with WNV infection were reported this week. No sentinel chickens tested positive for antibodies to WNV this week. In 2016, positive samples from 18 sentinel chickens have been received from six counties.

SLEV activity: No human cases of SLEV infection were reported this week. No sentinel chickens tested positive for antibodies to SLEV this week. In 2016, there have been no positive samples reported.

EEEV activity: No human cases of EEEV infection were reported this week. No horses with EEEV infection were reported this week. No sentinel chickens tested positive for antibodies to EEEV this week. In 2016, positive samples from eight sentinel chickens have been received from three counties.

International Travel-Associated Dengue Fever Cases: No cases of dengue fever were reported this week in persons that had international travel. In 2016, seven cases have been reported.

Dengue Fever Cases Acquired in Florida: No cases of locally acquired dengue fever were reported this week. In 2016, no cases of locally acquired dengue fever have been reported.

International Travel-Associated Chikungunya Fever Cases: No cases of chikungunya fever were reported this week in persons that had international travel. In 2016, no travel-associated cases have been reported.

Chikungunya Fever Cases Acquired in Florida: No cases of locally acquired chikungunya fever were reported this week. In 2016, no cases of locally acquired chikungunya fever have been reported.

International Travel-Associated Zika Fever Cases: Eight cases of Zika fever were reported this week in persons that had international travel. In 2016, 50 travel-associated cases have been reported. No cases of locally acquired Zika fever have been reported.

Advisories/Alerts: Eleven counties are currently under a declared public health emergency due to the identification of travel-associated Zika infections: Alachua, Brevard, Broward, Hillsborough, Lee, Miami-Dade, Orange, Osceola, St. Johns, Santa Rosa, and Seminole Counties. There is a Level 2 (Alert) Travel Health Notice from the CDC for multiple countries in the Caribbean, Central and South America, Mexico, Cape Verde, and Pacific Islands related to Zika virus transmission and a possible association with poor pregnancy outcomes. Pregnant women should consider postponing travel to these areas. There is a Level 1 (Watch) Travel Health Notice from the CDC for multiple countries in the Caribbean, Central and South America, and Mexico, related to the transmission of chikungunya virus. While a travel health notice has not been issued for the recent locally acquired dengue fever cases in Hawaii, visitors should continue to take appropriate mosquito bite precautions while traveling. Additional information on travel health notices can be found at the following link: <http://wwwnc.cdc.gov/travel/notices>.

2016 Human Case Summary*

International Travel-Associated Chikungunya Fever Cases: No cases of chikungunya with onset in 2016 have been reported in individuals with travel history to a chikungunya endemic country in the two weeks prior to onset.

International Travel-Associated Dengue Fever Cases: Seven cases of dengue with onset in 2016 have been reported in individuals with travel history to a dengue endemic country in the two weeks prior to onset. Countries of origin were: Brazil, Colombia, Costa Rica, Cuba (2), Haiti, and Venezuela. Counties reporting cases were: Broward, Clay, Miami-Dade (2), Orange, Palm Beach, and Sarasota. In 2016, six cases of dengue reported in Florida have been serotyped by PCR. Additional serotyping and strain typing are being conducted.

	# of cases per serotype – 2016
DENV-1	1
DENV-3	2
DENV-4	3
	6

International Travel-Associated Zika Fever Cases: Fifty cases of Zika fever have been reported in individuals with travel history to a country or area experiencing Zika virus activity. Countries of origin were: Brazil (4), Colombia (13), Costa Rica, El Salvador (2), Haiti (9), Honduras (3), Honduras/Guatemala, Nicaragua (4), Puerto Rico (3), and Venezuela (10). Counties reporting cases were: Alachua, Brevard, Broward (7), Hillsborough (3), Lee (3), Miami-Dade (24), Orange (3), Osceola, St. Johns, Santa Rosa, and Seminole. One case was reported in a non-Florida resident. Four of the 50 cases involve pregnant women whose counties of residence are not included in the individual county totals to protect privacy.

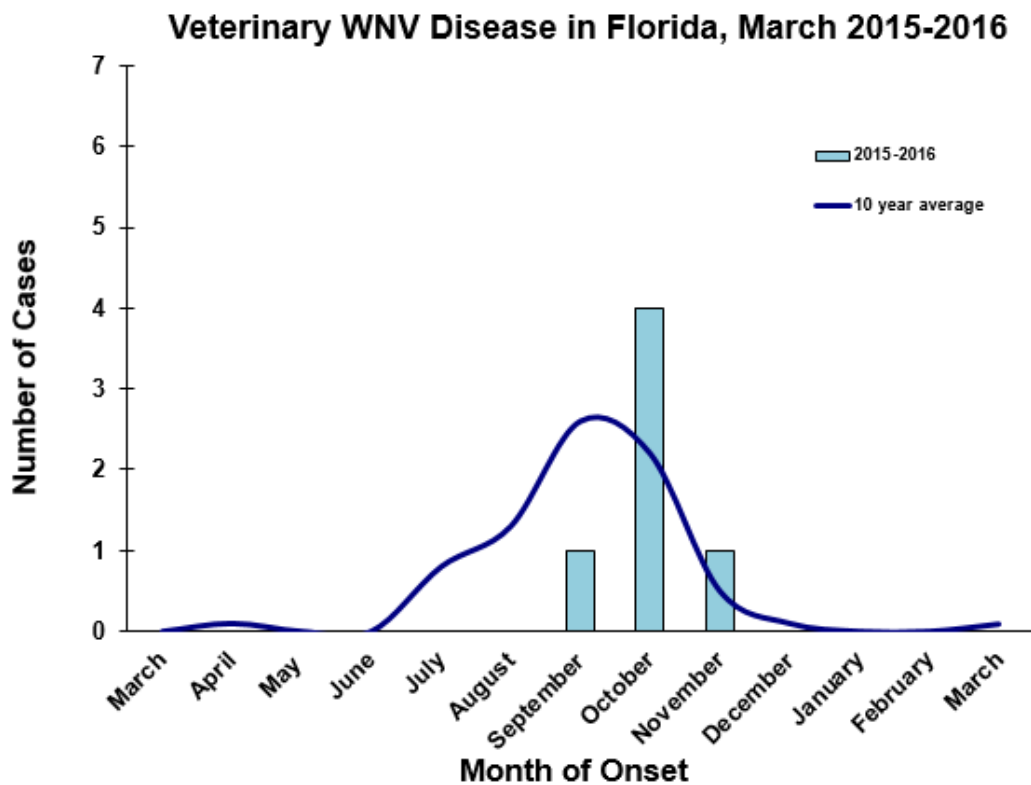
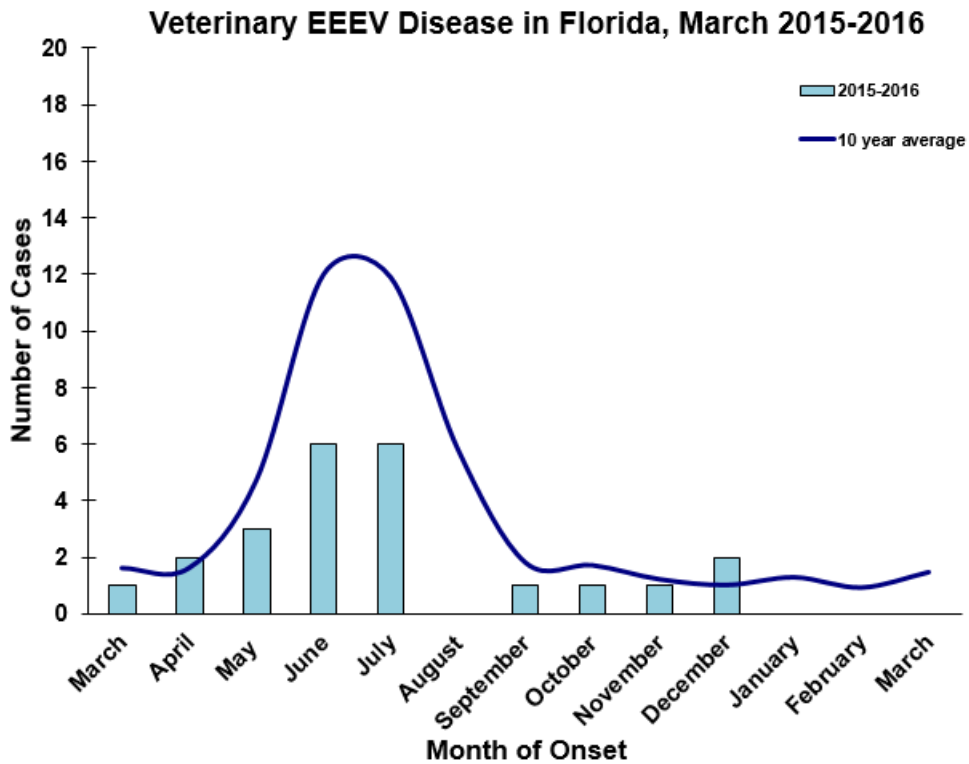
International Travel-Associated Malaria Cases: Four cases of malaria with onset in 2016 have been reported. Countries of origin were: Cameroon, Kenya, Sudan, and Uganda. Counties reporting cases were: Flagler, Hillsborough, Orange, and Sarasota Counties.

Three cases (75%) were diagnosed with *Plasmodium falciparum*. One case (25%) was diagnosed with *Plasmodium malariae*.

Veterinary Cases*

*Veterinary cases are reported by date of onset

No horses with EEEV or WNV infection were reported this week.



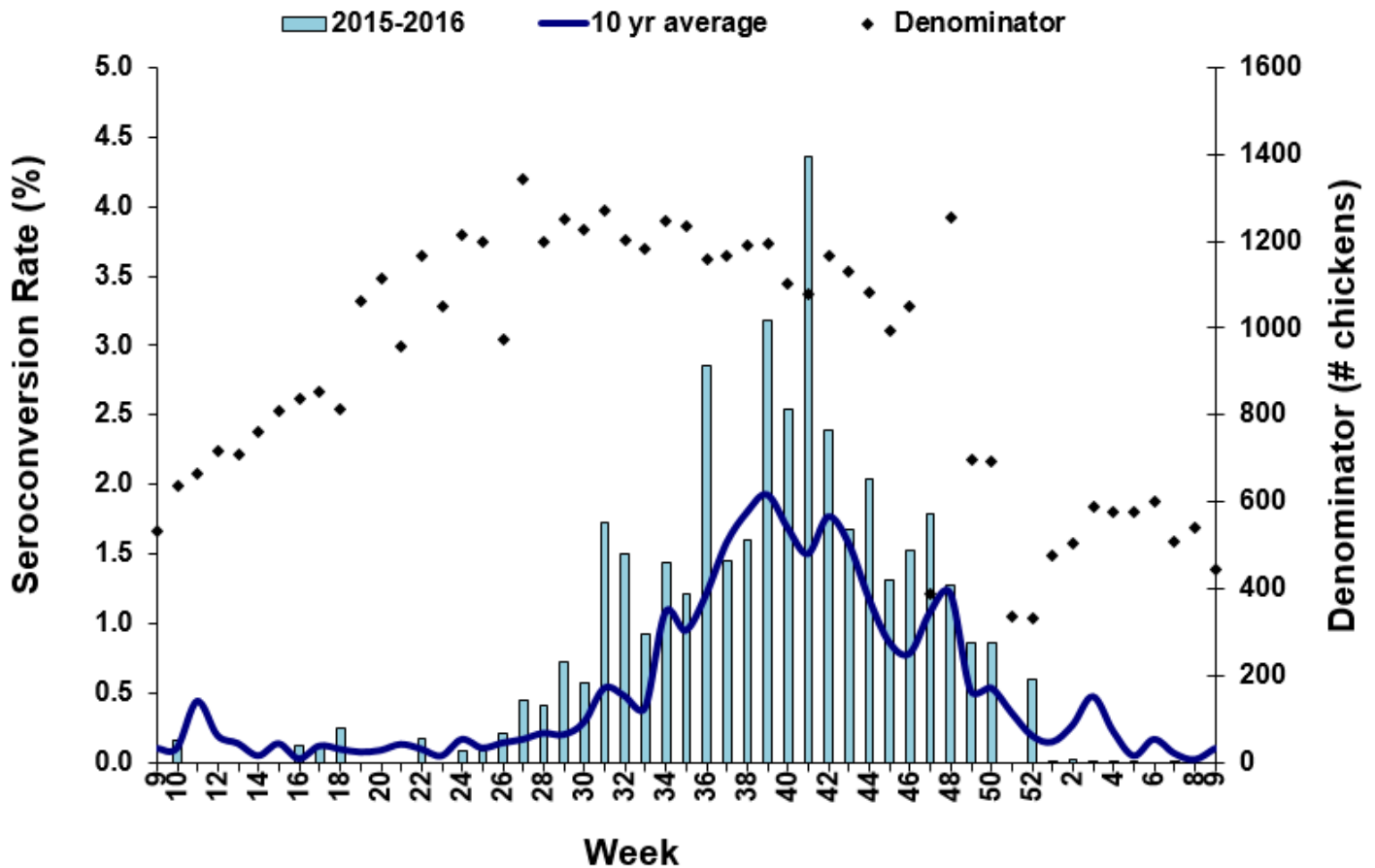
Sentinel Chickens*

The table below is for the reporting of confirmatory laboratory results from this week. Some of the samples were collected at earlier dates. The date of collection is recorded for samples collected on that day along with the total number of positives and the corresponding seroconversion rate for the week the sample was collected.

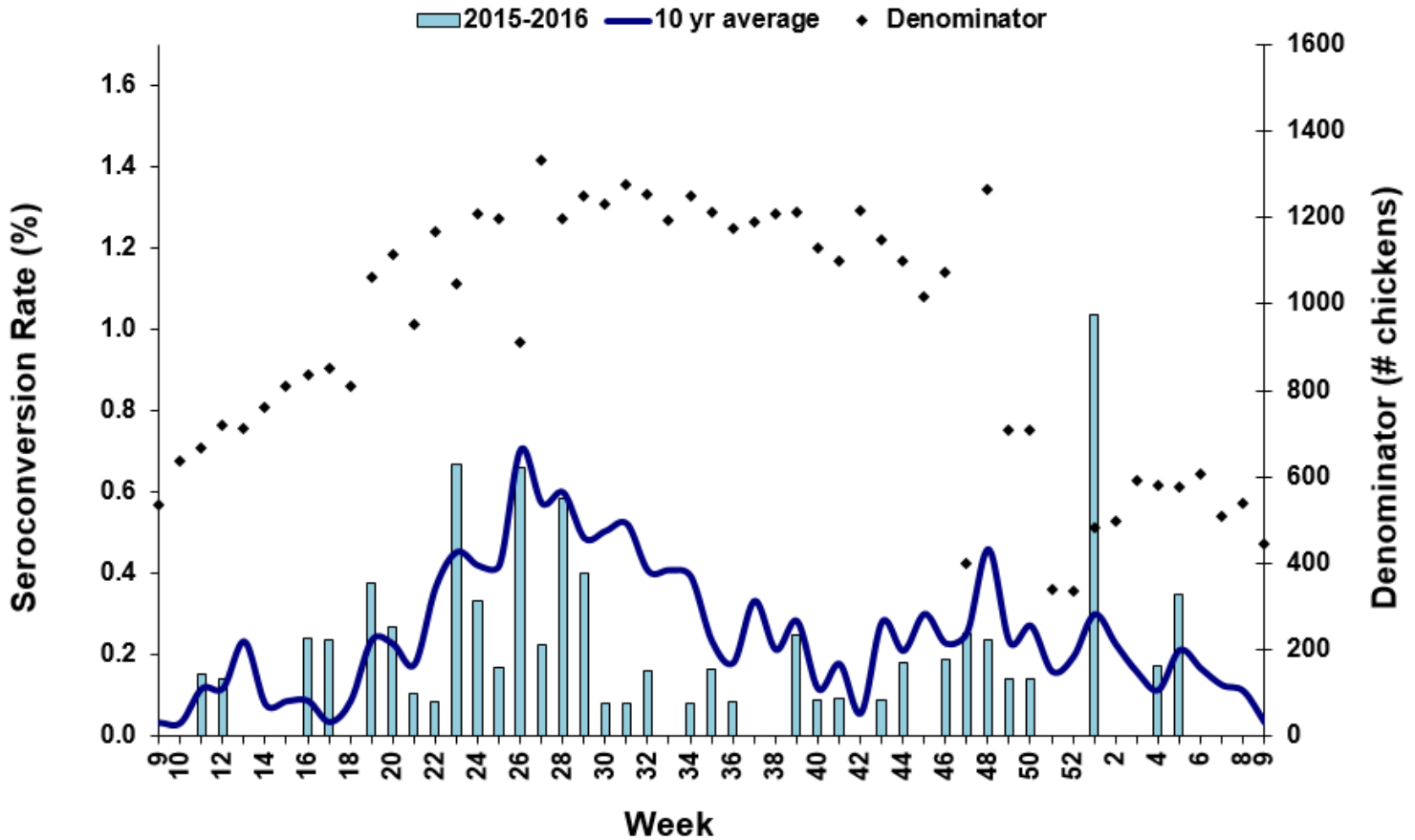
No sentinel chickens tested positive for antibodies to SLEV, WNV, EEEV or HJV this week.

County	Collection Date	Seroconversion Rates (%)					County Totals		
		Flavi	SLEV	WNV	Alpha	EEEV	HJV	Collection Week	YTD

Sentinel Seroconversions to WNV in Florida, 2015-2016



Sentinel Seroconversions to EEEV in Florida, 2015-2016



Mosquito Pools

No mosquito pools tested positive for EEEV or WNV this week.

County	Collection Date	Result	Species	County YTD

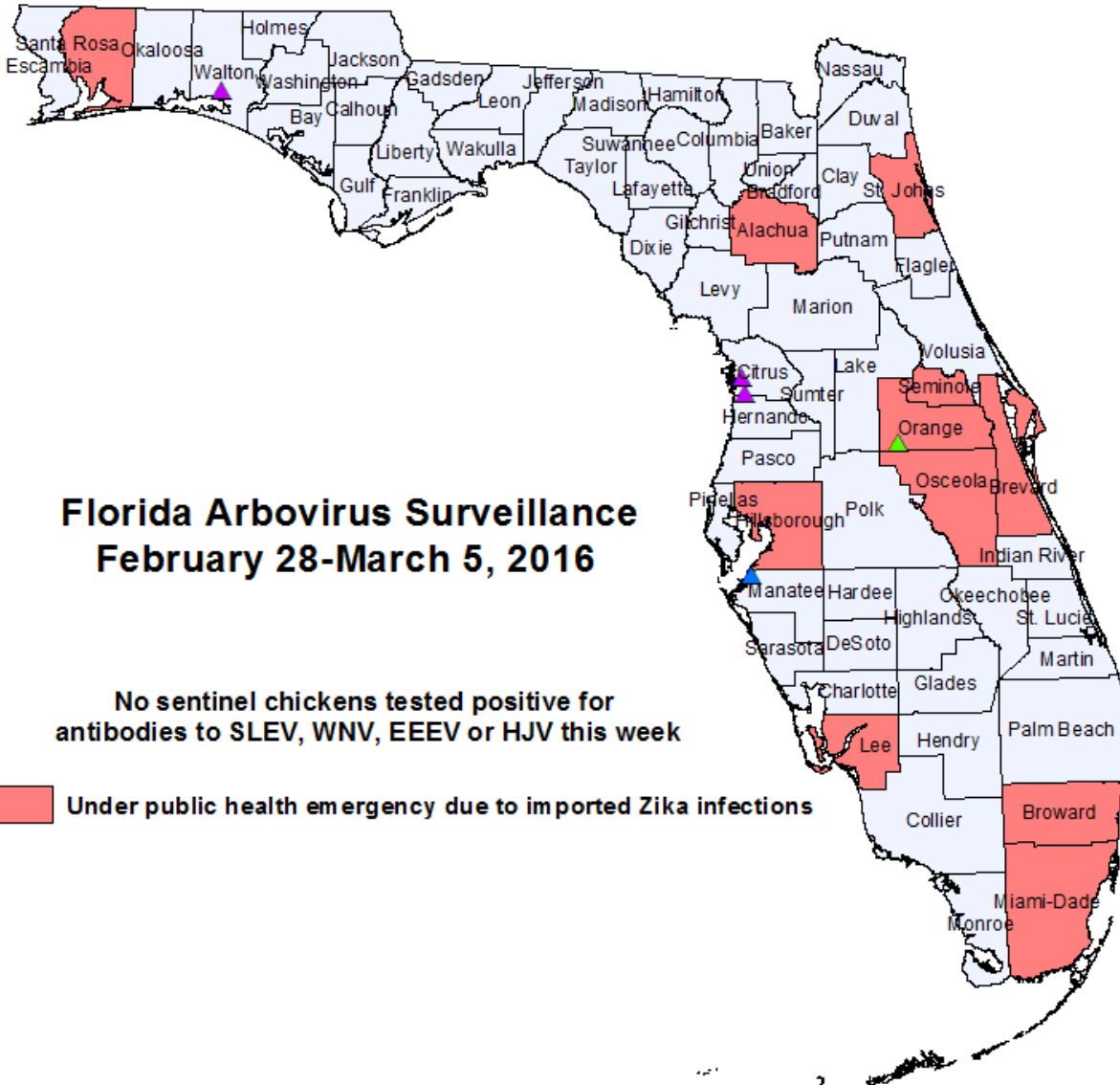
Dead Birds

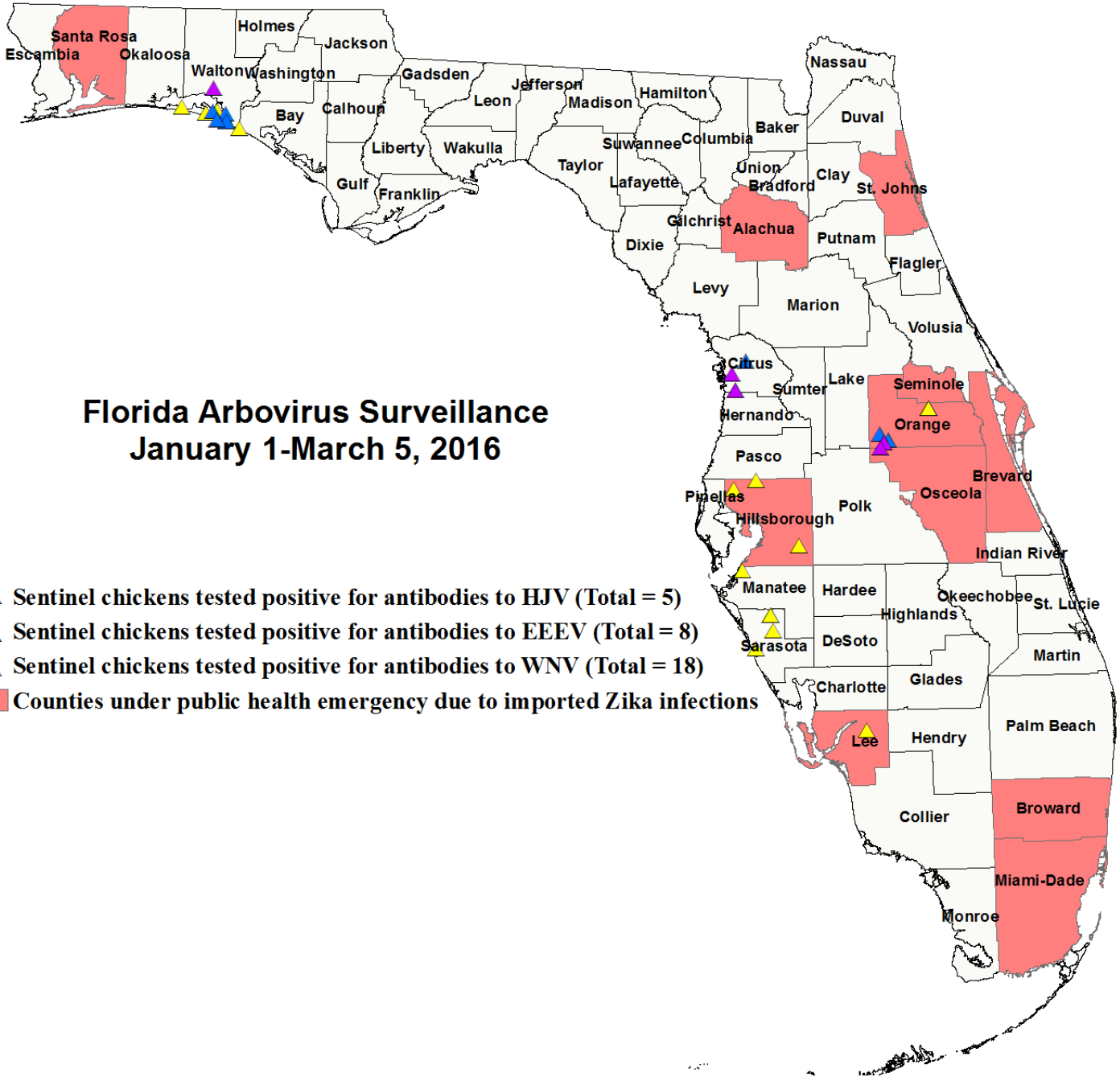
The Fish and Wildlife Conservation Commission (FWC) collects reports of dead birds, which can be an indication of arbovirus circulation in an area. This week, 17 reports representing a total of 50 dead birds, including 4 raptors were received from 14 counties.

In 2016, 141 reports representing a total of 518 dead birds (32 crows, 0 jay, 25 raptors, and 5 doves) were received from 41 of Florida's 67 counties. Please note that FWC collects reports of birds that have died from a variety of causes, not only arboviruses. Dead birds should be reported to www.myfwc.com/bird/.

County	Total Dead Birds	Crows	Jays	Raptors	Dove
Alachua	1	0	0	1	0
Bay	7	0	0	0	0
Brevard	1	0	0	0	0
Charlotte	2	0	0	0	0
Escambia	1	0	0	0	0
Hernando	1	0	0	0	0
Highlands	1	0	0	1	0
Leon	15	0	0	0	0
Manatee	1	0	0	1	0
Palm Beach	1	0	0	0	0
Pinellas	1	0	0	0	0
Polk	1	0	0	1	0
Volusia	16	0	0	0	0
Wakulla	1	0	0	0	0

Maps





2016 Arbovirus Activity by County	
County	Arbovirus Activity
Citrus	EEEV: 2 sentinels (1/4, 1/25) HJV: 2 sentinels (2/1, 2/8)
Hillsborough	WNV: 3 sentinels (1/5, 1/12)
Lee	WNV: 1 sentinel (1/26)
Manatee	WNV: 1 sentinel (2/17)
Orange	WNV: 3 sentinels (1/11, 1/26) EEEV: 2 sentinels (1/7, 2/4) HJV: 2 sentinels (1/14, 1/21)
Sarasota	WNV: 4 sentinels (1/11, 1/15, 1/19, 2/1)
Walton	EEEV: 4 sentinels (1/4, 2/2) WNV: 6 sentinels (1/11, 1/19) HJV: 1 sentinel (1/26)

Acknowledgements and Data Sources

Contributors: Andrea Bingham, PhD, MSPH, Shaiasia Itwaru-Womack, MPH, and Danielle Stanek, DVM, DOH Bureau of Epidemiology; Lea Heberlein-Larson, Lylah Seaton, and Valerie Mock, DOH Bureau of Public Health Laboratories; Carina Blackmore, DVM, PhD, DOH Division of Disease Control and Health Protection.

For more surveillance information, please see the DOH website at: <http://www.floridahealth.gov/diseases-and-conditions/mosquito-borne-diseases/surveillance.html>

For arbovirus surveillance information for the United States, please see the Centers for Disease Control and Prevention website at: <http://www.cdc.gov/ncidod/dvbid/westnile/surv&control.htm>

**Case tallies included in the weekly Florida arbovirus surveillance report include confirmed and probable cases for EEE, WNV infection, SLE, dengue, chikungunya, and malaria by date of onset. Suspect cases are not included. Activity is mapped by county of exposure rather than county of residence. Case definitions being used in Florida are consistent with national criteria provided by the Council of State and Territorial Epidemiologists (CSTE) and may be viewed at: <http://www.floridahealth.gov/diseases-and-conditions/disease-reporting-and-management/disease-reporting-and-surveillance/index.html>. Case tallies reported by CDC do not include suspect cases and cases are reported by patient state of residence rather than where the exposure occurred. Data is provided by county health departments, Department of Health Bureau of Public Health Laboratories, Department of Agriculture and Consumer Services, mosquito control agencies, Florida Fish and Wildlife Conservation Commission, medical providers and veterinarians. Equine cases are provided by the Department of Agriculture and Consumer Services.